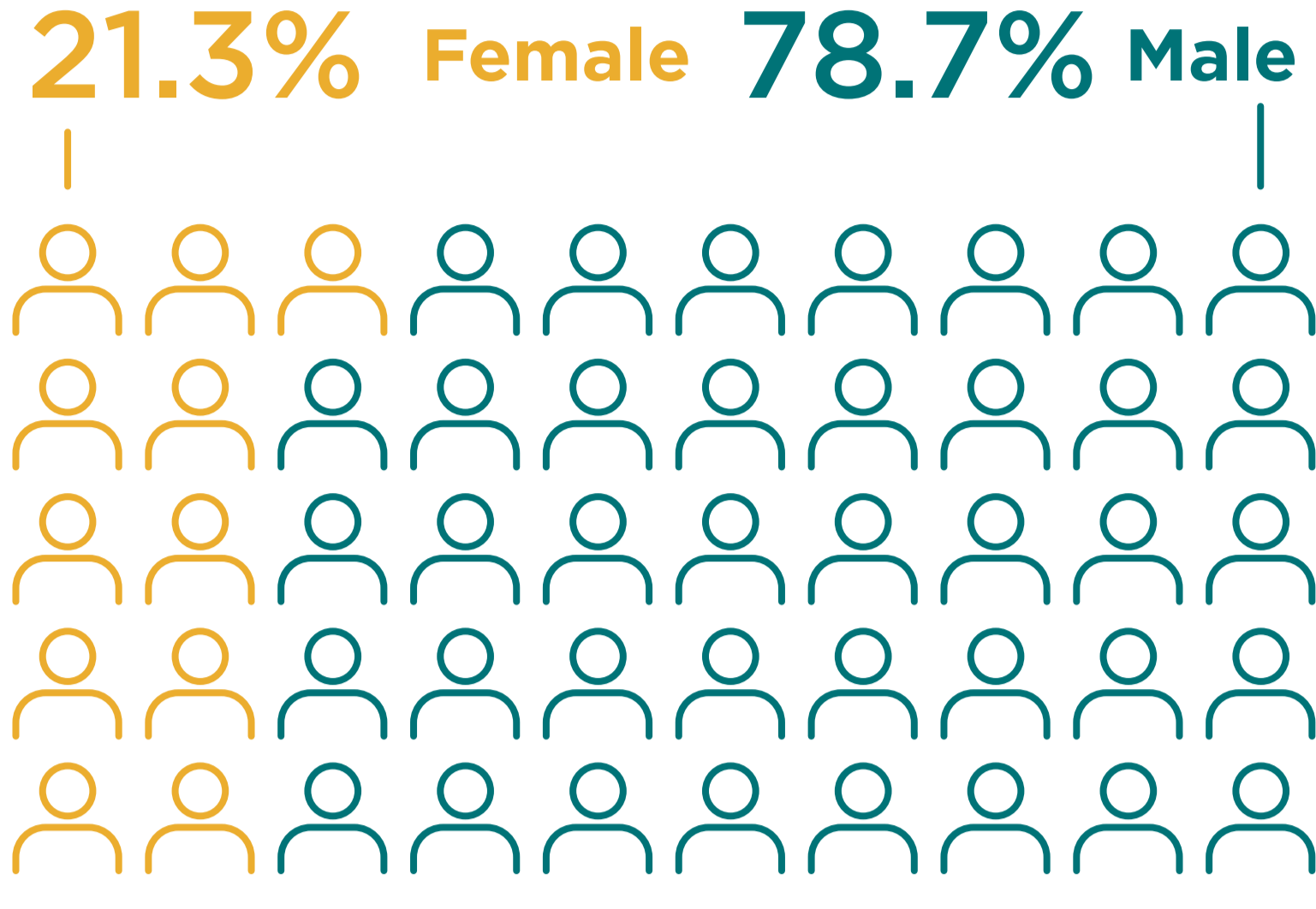
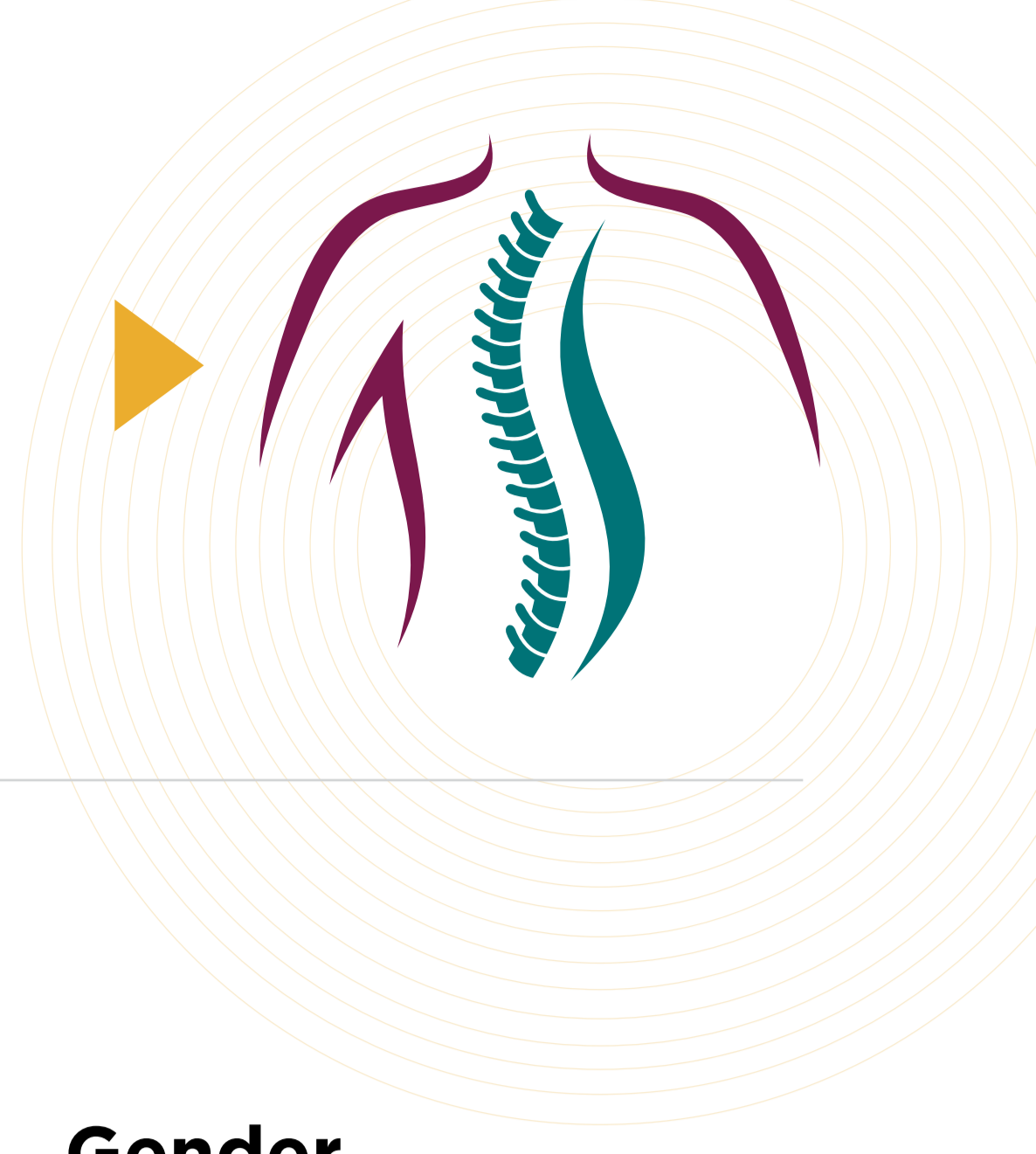


The Program

The Spinal Cord Injury & Related Disorders Day Treatment Program treats SCI patients at all levels of their rehabilitation journey.

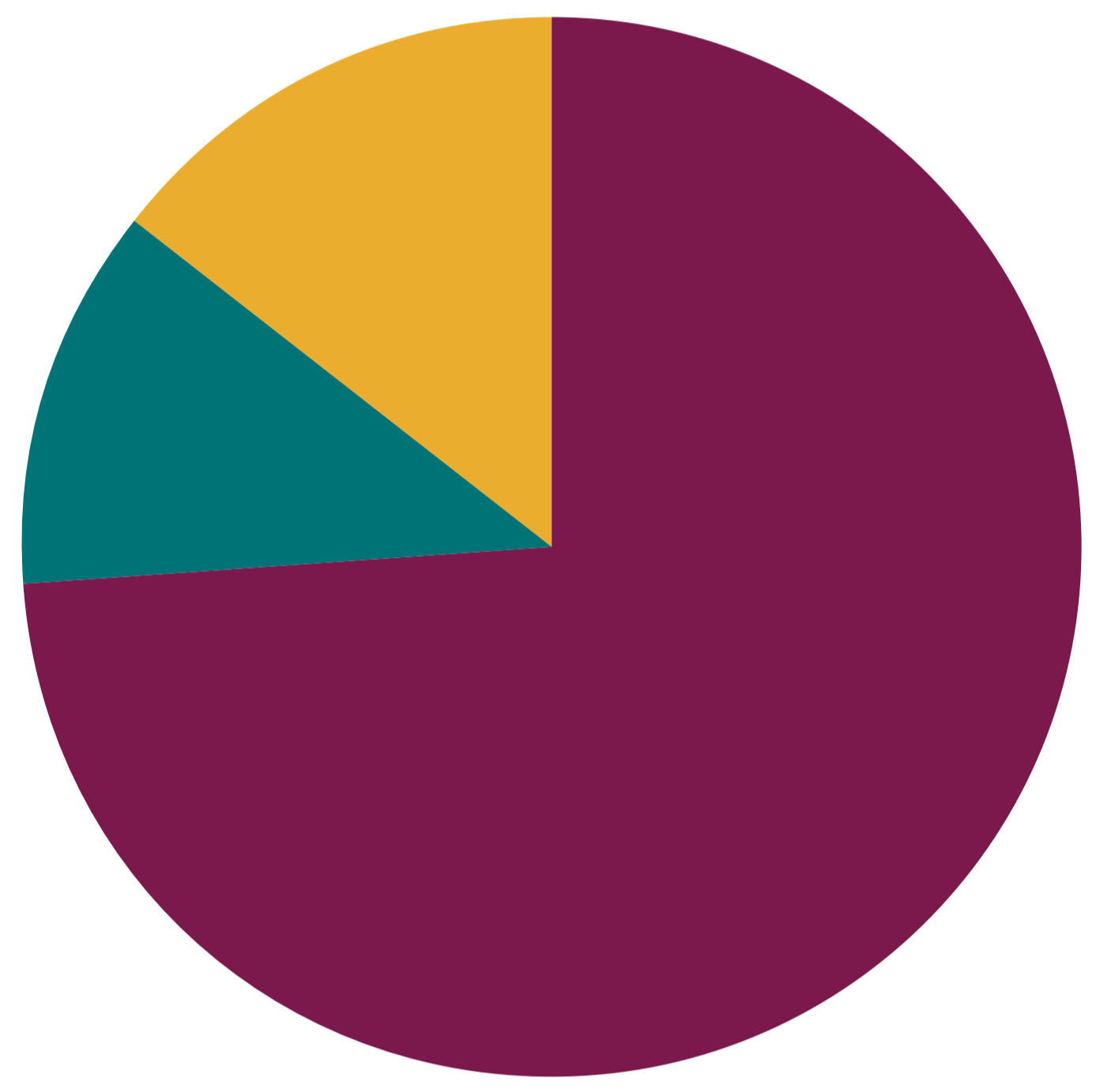
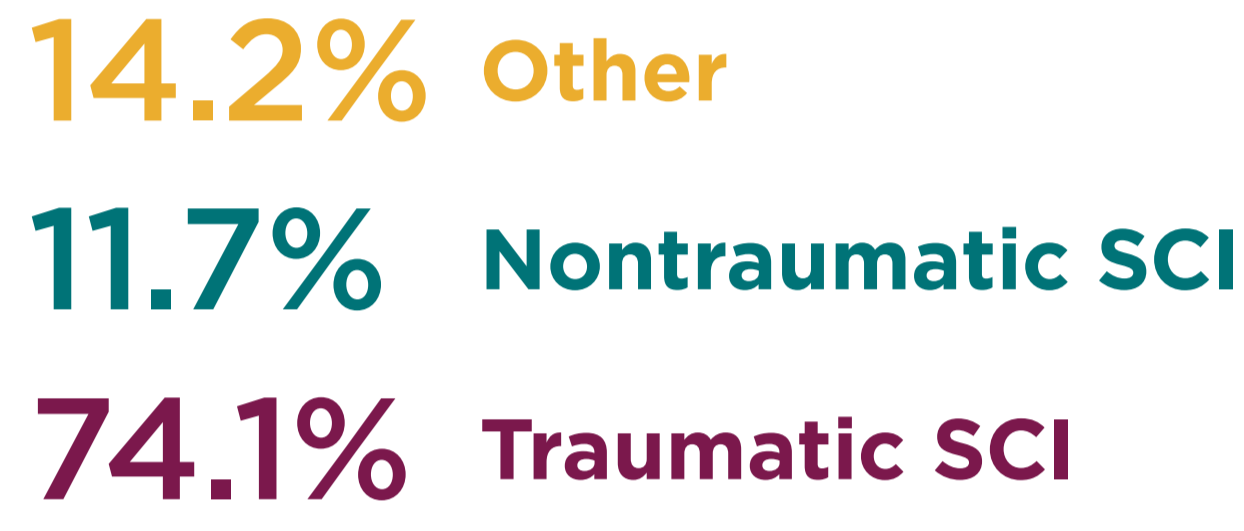


Gender Breakdown

Nationally, males represent the majority of patients with SCI related injuries, which is also reflected in Brooks SCI/D Day Program.

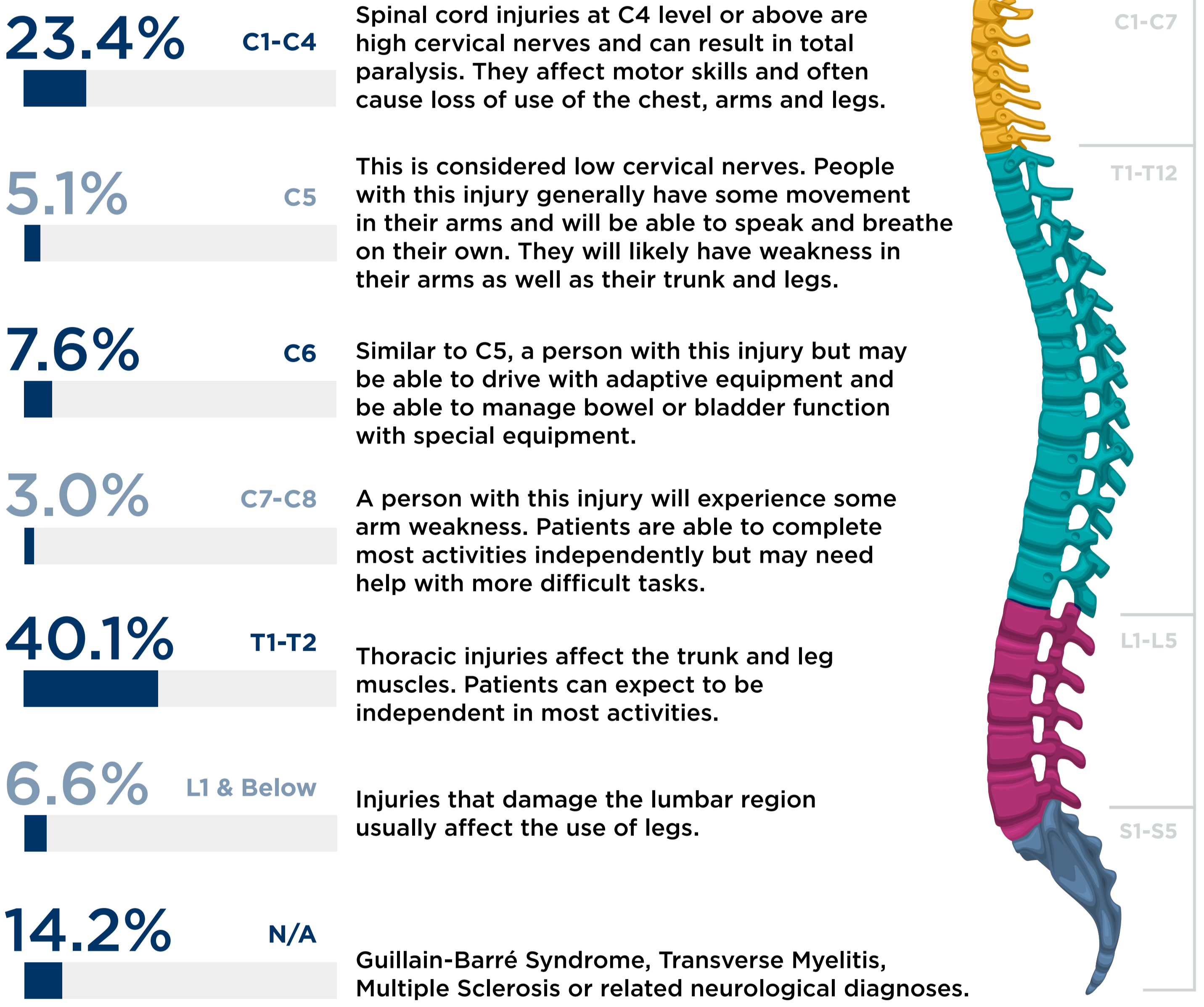
Diagnosis Levels

The patient diagnosis mix that attend SCI/D Day Program and use its services. The population is primarily traumatic injury for spinal cord.



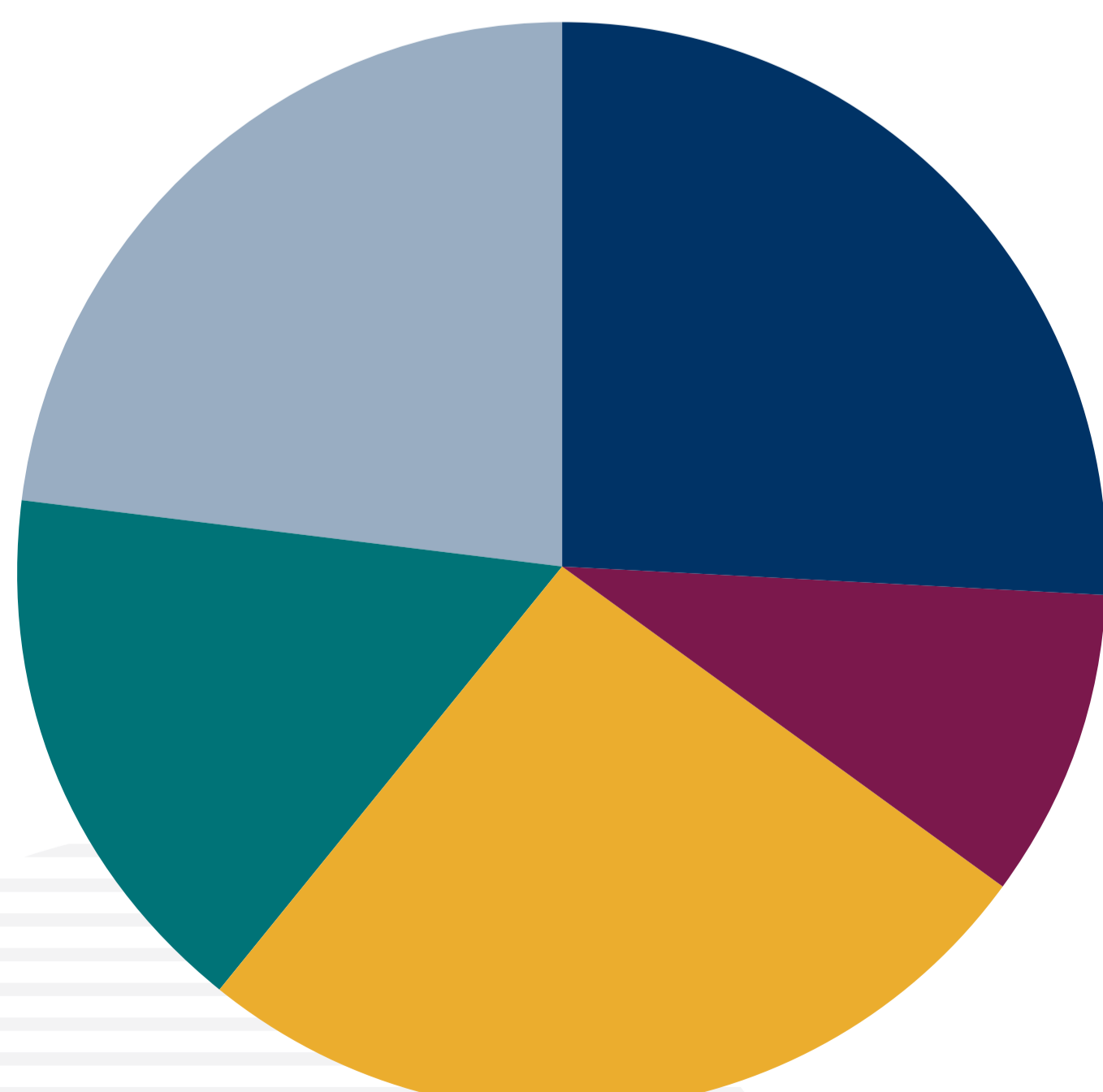
Level of Injury Treated

The vertebrae are grouped into sections. The higher the injury is on the spinal cord, the more it affects the ability of the body to move and feel.



ASIA Grade of Patients

Spinal cord injuries are graded using the American Spinal Injury Association (ASIA) Impairment Scale. The grading system varies based on severity from letters A to E. Doctors use it to determine the severity of a SCI and which parts of the body are affected.



25.9% ASIA A

Complete injury with loss of motor and sensory function.

9.1% ASIA B

Incomplete injury with preserved sensory function, but complete loss of motor function.

25.9% ASIA C

Incomplete injury with preserved motor function below the injury level, **less than half** these muscles have MRC (Medical Research Council) grade 3 strength.

16.2% ASIA D

Incomplete injury with preserved motor function below the injury level, **at least half** these muscles have MRC (Medical Research Council) grade 3 strength.

22.8% Not Applicable